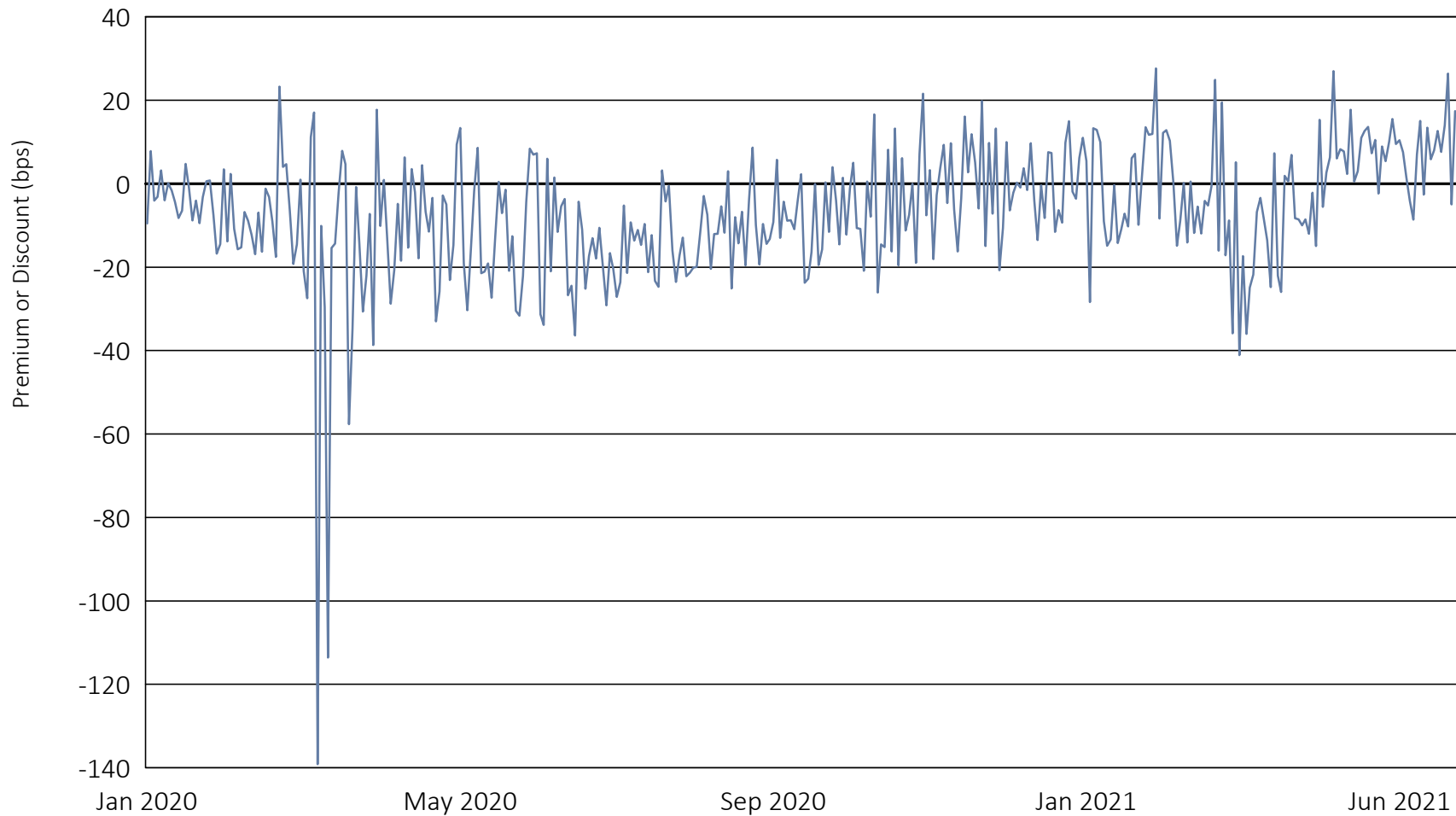


WBI Power Factor High Dividend ETF

January 02, 2020 to June 30, 2021



	Calendar Year 2020	Calendar Year 2021 through June 30, 2021
Days traded at premium	60	65
Days traded at net asset value	1	0
Days traded at discount	192	59

The following table and line graph are provided to show the frequency at which the closing price of the Fund was at a premium (above) or discount (below) to the Fund's daily net asset value ("NAV"). The table and line graph represent past performance and cannot be used to predict future results. Shareholders may pay more than NAV when buying Fund shares and receive less than NAV when those shares are sold because shares are bought and sold at current market prices.